

From 1 Nov. 2021 foreign and Thai nationals entering Thailand need to apply in the "Thailand Pass Registration System (for air travel only)" via <https://tp.consular.go.th>, as imposed by the Thai authorities.

As of 22 Dec. 2021, Test & Go and Sandbox programs have been closed for registration until further notice.

Remarks: Starting from 1 Dec. 2021, due to Omicron variant of COVID-19, travelers from 8 countries (Botswana, Eswatini, Lesotho, Malawi, Mozambique, Namibia, South Africa and Zimbabwe) are not allowed to enter Thailand, except for Thai citizen. Travelers from other countries in Africa will have to undergo the alternative quarantine for 14 days, regardless of their vaccination status. 3 swab tests (on day 0-1, 6 and 12) for RT-PCR for COVID-19 will be done.

PATIENT SEEKING FOR MEDICAL CARE AT THE HOSPITAL:

- Alternative Hospital Quarantine (AHQ) documents will be processed and submitted to the Thai Ministry of Public Health.
- Once the documents are stamped and signed, they will be sent to the patient for the submission into the Thailand Pass system, please see the information for the application below.
- Patient traveling by ground, please contact the Royal Thai Embassy / Consulate-General near you with the stamped and signed AHQ documents for the process of Certificate of Entry (COE).



DOCUMENTS REQUIRED FOR THE APPROVAL PROCESS:

1. A patient's passport copy with a certified signature.
2. A companion's passport(s) copy(ies) with a certified signature(s). [max. 3 companions, 1 only preferred]
3. An updated medical report with relevant investigation results.
4. A Referral Letter from a doctor in the current country, stating the need to seek treatment in Thailand.
5. A Vaccination Certificate, stating its name, a manufacturer and lot number of vaccine with a provider's or center's name.*
6. A proof of financial status, e.g. bank statement.
7. An Affidavit of Support.** (Only for patient with companions.)
8. A Letter of Intent and Consent for Quarantine.**
9. A Communicable Diseases Screening Form.**
10. A Travel Advice and Assessment Before Medical and Surgical Care Form.**

*Accepted vaccines:

	Manufacturer or Name	Number of doses for a completed course
1.	AstraZeneca	2
2.	COVIL0	2
3.	Comirnaty	2
4.	CoronaVac (Sinovac)	2
5.	Covishield	2
6.	Janssen/Ad26.COVS.S	1
7.	Moderna	2
8.	Pfizer – BioNTech COVID -19 Vaccine	2
9.	Sinopharm Vaccine	2
10.	Sputnik V	2
11.	Vaxzevria	2

****No. 7 – 10: Prepared by Bumrungrad International, filled out and signed by the patient and/or companions.**

Relevant documents will be submitted to the Thai Ministry of Public Health.



INFORMATION FOR THE THAILAND PASS REGISTRATION SYSTEM (FOR AIR TRAVEL ONLY) WEBSITE:

Plan	Alternative Quarantine
Purpose of Arrival	Healthcare
Booking via	Alternative Hospital Quarantine
Booking ID	(Your Hospital Number)
Accommodation Name	Bumrungrad International Hospital
Address	33 Sukhumvit 3, Vadhana, Bangkok, 10110, Thailand
Duration of Stay	7, 10 or 14 days (depending on your vaccination status, mode of transport and the current/origin country)
Document of booking accommodation	(Invitation Letter from the hospital)

DOCUMENTS REQUIRED PRIOR TO DEPARTURE:

1. A Thailand Pass.
2. A valid Thai visa.
3. An insurance policy, covering COVID-19, minimum amount of USD50,000 each, for the patient and companion(s).
4. A flight ticket. (if available)
5. A COVID-19 test result within 72 hours before departure. (DO NOT attempt to get the test before the approval is confirmed.)
6. A fit-to-fly certificate within 72 hours before departure. (Not required by Thai authorities. Please check with your airlines, if this document is needed.)

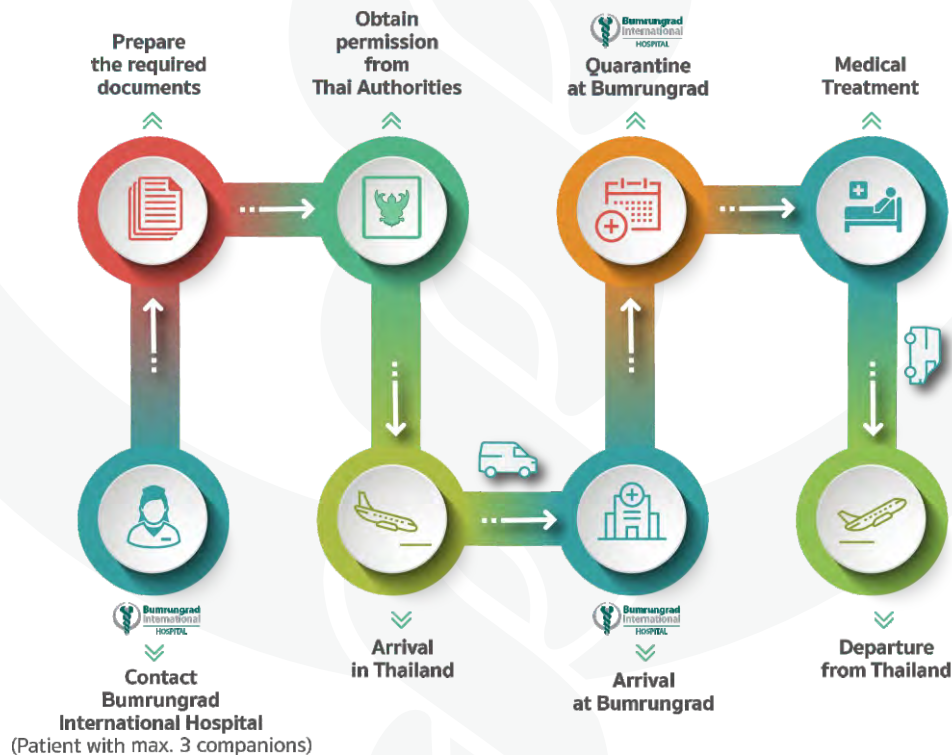
Disclaimer: The final decision regarding the quarantine scheme and number of quarantine days will be determined definitely by the Immigration and Disease Control officers at the port of arrival into Thailand.

IN ORDER TO MITIGATE THE RISK OF COVID-19 THROUGHOUT THE TRAVEL, INCLUDING GROUND AND AIR TRANSPORTATION, PATIENTS AND THEIR COMPANION(S) SHOULD:

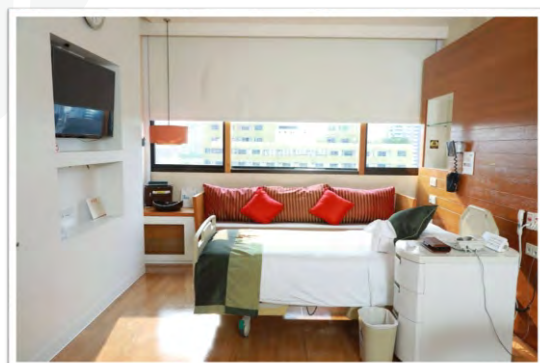
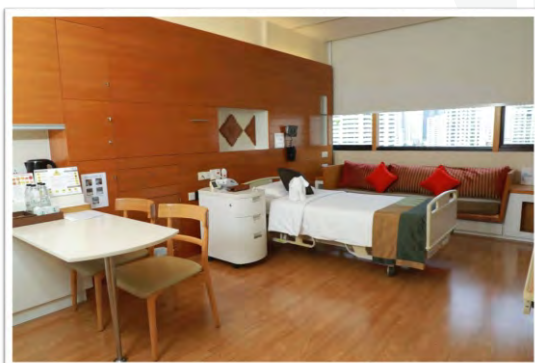
- Wear mask and maintain appropriate distancing in the public area at all times.
- Wash their hands often with soap and water for at least 20 seconds.
- If soap and water are unavailable, use an alcohol-based hand sanitizer with at least 60% alcohol content.
- Bring sanitation wipes with them. Avoid touching their eyes, hands and mouth. Cover their mouth and nose with their bent elbow or tissue when coughing or sneezing.
- In addition to above practices, wear mask and wipe their seats and tray with sanitation wipes.

PROTOCOL FOR QUARANTINE IN BUMRUNGRAD INTERNATIONAL HOSPITAL:

- Quarantine for 7, 10 or 14 (plus 1-2) days upon arrival into Thailand.
- Individuals with completed course of accepted COVID-19 vaccination*, for at least 14 days prior to departure: 7-day quarantine.
- Individuals without completed course of accepted COVID-19 vaccination*, travel by air or water transportation: 10-day quarantine.
- Individuals without completed course of accepted COVID-19 vaccination*, travel by ground transportation: 14-day quarantine.
- Arrival (as shown on ticket) 12:01am midnight to 6:00pm = day 1. Arrival 6:01pm to 12:00am midnight = day 0, the next morning = day 1.
- One companion in the same room with patient. 2nd and 3rd companions in their own rooms, one room each.
- Patient and companions must remain in the room at all times, except for medical investigations and procedures.
- Fever and respiratory tract symptoms monitoring.
- Swabs for COVID-19 (rt-PCR) x 2 times (day 0-1 and 6 / day 0-1 and 8 / day 0-1 and 12 accordingly). [3 times (day 0-1, 6 and 12) for travelers from Africa.]
- Positive COVID-19 case admitted in Bumrungrad International on their own expenses (under insurance coverage, conditions may apply).
- **Smoking not allowed.**
- **Leaving the quarantine facility before the completion of the quarantine duration is not allowed by the Thai authorities, unless for the sole purpose of traveling out of Thailand.**



*The treatment can be commenced during or after the quarantine period, depending on the care team's consideration.





PACKAGE COST (FOR OUTPATIENT CASE ONLY):

7-DAY PACKAGES (FOR SANDBOX AND AHQ PROGRAMS)

Patient or companion in
Single room
40,500 THB

Patient or companion in
Super Deluxe room*
52,500 THB

Companion with no room
(staying with patient)
16,500 THB

10-DAY PACKAGES

Patient or companion in
Single room
52,500 THB

Patient or companion in
Super Deluxe room*
69,000 THB

Companion with no room
(staying with patient)
19,500 THB

14-DAY PACKAGES

Patient or companion in
Single room
68,500 THB

Patient or companion in
Super Deluxe room*
91,000 THB

Companion with no room
(staying with patient)
23,500 THB

* Limited number of Super Deluxe room, subject to availability.

Inclusion: Room charge for a number of corresponding nights (quarantine only, no inpatient care), 3 meals per day and 2 COVID-19 tests with daily fever monitoring.

Remarks

- A deposit of THB 100,000.00 for the patient (for the quarantine package and treatment), as well as the full amount of quarantine package cost for companion(s) will be requested.
- The package price cannot be divided or applied to any discount.
- The quarantine package costs (non-refundable according to usage) are required to be paid and settled before arrival to make a reservation for AHQ package.
- The actual cost and a deposit amount upon arrival may vary, e.g. additional inpatient or ICU charges, depending on the patient's condition.
- The doctor's fee upon arrival is included.
- The specialists' fees and other treatment costs not included in the package.
- The cost for the 3rd swab test will be charged additionally from the package cost above.
- The room size: Single room 34 square meters (366 square feet) / Super Deluxe room 44 square meters (474 square feet).
- An additional room charge of **THB 2,000 / night** will be incurred, in case the patient is in the ICU and the 1st companion is in the room alone.
- Available payment options: <https://www.bumrungrad.com/en/patient-finance-and-insurance-information>
- Lists of insurance we accept: <https://www.bumrungrad.com/en/patient-services/insurance>

**For more information, please contact
Bumrungrad's Medical Transport Department (24/7):**

Tel: +66 2011 3333

Email: MedicalTransport@bumrungrad.com